

## Blessed with a beautiful Living

Vamshi Vihar is more than just a residential project; it is a way of life envisioned to give you perfection in every aspect

Whatever you dream about, spaciousness, connectivity or a life filled with comforts and amenities, this is a project that makes it a reality. Discover a beautiful life created around your dream.



## Specifications

-  **STRUCTURE** : RCC framed structure
  -  **WALL** : Clay Bricks (9" for all external walls & 4" for internal walls)
  -  **PLASTERING** : Cement Mortar in Sponge Finish
  -  **DOORS**  
Main Door : Polished Teak wood frame with necessary Brass Hardware  
Internal Doors : Country wood frame with factory made flush shutter  
Windows : UPVC Windows (Nexus/LG) with plain glass and safety grills
  -  **PAINTING**  
External walls with cement based paints  
Internal walls are smooth finished with wall care (Brila/JK) base and top finish with two coats of emulsion paint (Asian/Dulex).  
Wood work with enamel paint
  -  **FLOORING**  
Vitrified Tile flooring (Aparna/RAK) in living, dining and bedrooms.  
Ceramic flooring in utility, toilets and balcony.  
Anti Skid tiles in lobby & Common areas.
  -  **KITCHEN**  
Kitchen platform shall be with black granite on one side of the room with Stainless Steel sink and tile doodling up to 24" above platform.
  -  **TOILETS**  
European W/c type closets (Parryware/Hindware) fitted with required taps, valves etc.  
Provision for Electrical geyser point together with necessary taps for water supply.  
Tile dadoing up to 7' height.
  -  **ELECTRIFICATION**  
Concealed copper wiring (Polycab/ RR/ Anchor) for three phase power supply shall be provided.  
Modular switches (Legrand/ Anchor) will be provided on each board.  
Provision for modern appliances such as Cable TV, Fridge, Computer, Telephone, etc., points will be provided.
  - BALCONIES** : One light point for each balcony.  
Washing machine power plug shall be provided in one balcony.
  - CABLE TV** : Provision for cable TV connection, internal wiring provided up to a common point
  -  **WATER SUPPLY & SANITARY**  
Parryware/ESS ESS or its equality brand taps (commercial quality).  
Ashirvad/Astral pipelines for water supply arrangement  
Provision for washing machine in Utility area.
  -  **LIFT** : 6 passenger lift (Johnson/OTIS/ KONE)
- Generator : Generator back-up for Lift, Common lighting, Motors and 3 lights and 2 fan points in all the flats.  
Note : Registration, GST, any other taxes, Electricity connection, Municipal Water, Piped gas and other applicable charges are extra.

<i>Corporate Office</i>	<i>Site address</i>	<i>Architect</i>	<i>Structural Engineers</i>
<b>Indraprastha Constructions</b> Ground Floor, Indraprastha Tejas Opp D-Mart, Jayendra Nagar, Kakinada – 533 003.	Yesuvari Street, Jaganaickpur, Kakinada – 533 002.	<b>PRM Associates</b> Architects & Urban Planners Vijayapuri Colony, Tarnaka, Secunderabad – 500 007.	<b>Venu Associates</b> Planners, Architects & Consulting Engineers 2-21-4/1, Forest office Road, Madhav Nagar, Kakinada – 533 003.
<b>Mob: +91 98855 55766/94925 12081/98852 33336</b>			
<b>Email: info@indra-prastha.com, www.indra-prastha.com</b>			

Note  
This document has been produced by the developer for advertising and general information only. The developer and its project team do not guarantee, warrant or represent that the information contained within this document is correct. Any interested party should undertake their own enquiries as to the accuracy of this information. The developer excludes unequivocally all interest and implied terms, conditions and warranties arising out of this document and excludes all liability for loss or damage arising there from. Images shown are Artist Impression and shown for illustrative purposes only. The plans are based on the current design for this development. Changes will undoubtedly be made through development, and dimensions, fittings, finishes and specifications are subject to change without notice. The location of all architectural features on the facade including vertical panels and fins will vary on each type plan and level. Their location on the marketing material is indicative of the design intent. The information contained herein is believed to be current, but is not guaranteed. Prospective purchasers must rely on their own enquiries. Furniture is not included. This document is for guidance and does not constitute an offer of contract.

indraprastha's  
**Vamshi Vihar**

A Member of  
**CREDAI**  
Kakinada

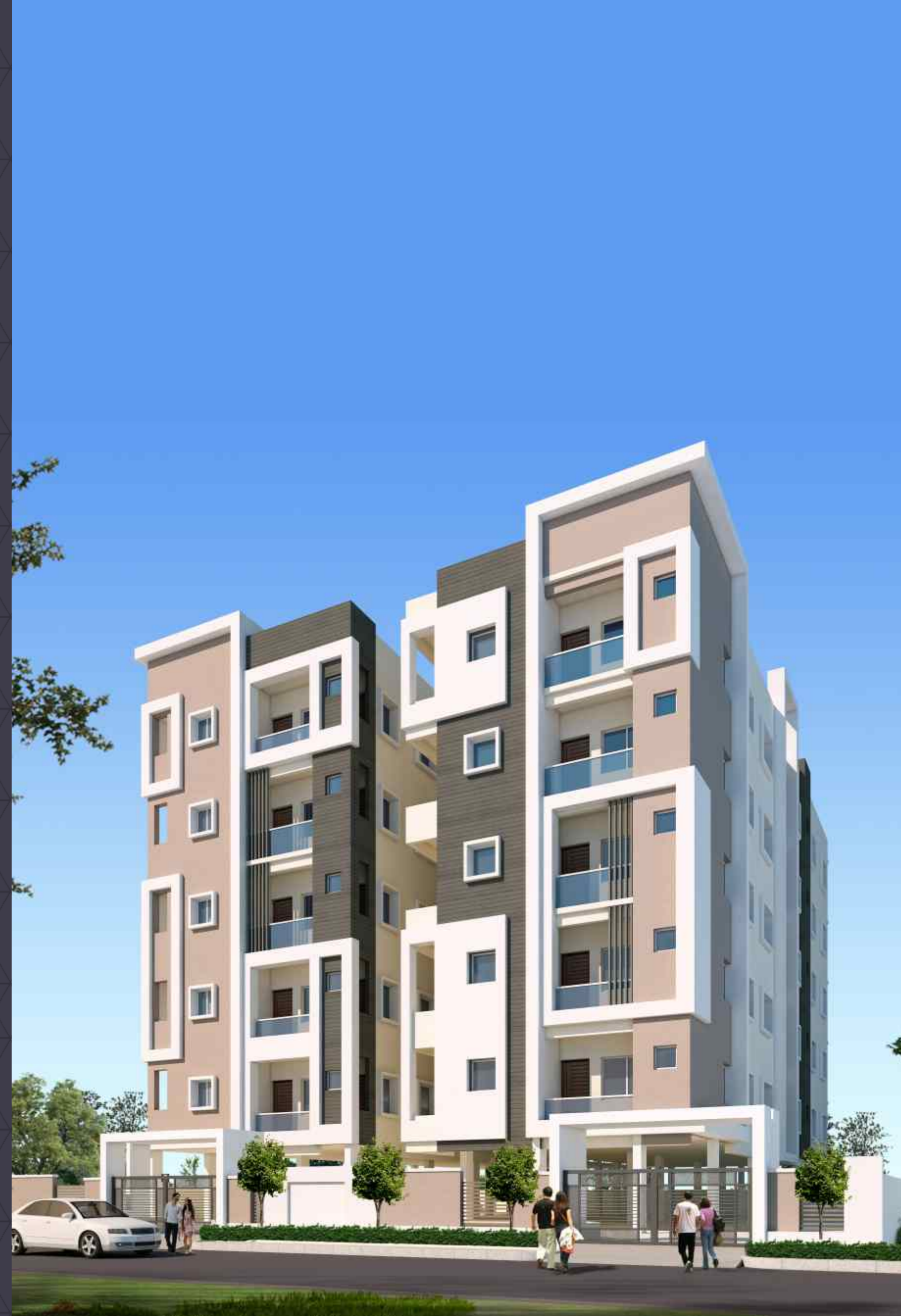
Location. Lifestyle. Space.

The Design let's in more air and more light

indraprastha's  
**Vamshi Vihar**

### BUILDING FEATURES

- + 100% vastu
- + 20 luxury style apartments
- + Unique building design
- + Assigned parking
- + Power Backup:  
5 points and for common areas, Lift & Motors
- + CC Cameras



crafted by | 08851 92657

LOCATION PLAN  
(NOT TO SCALE)

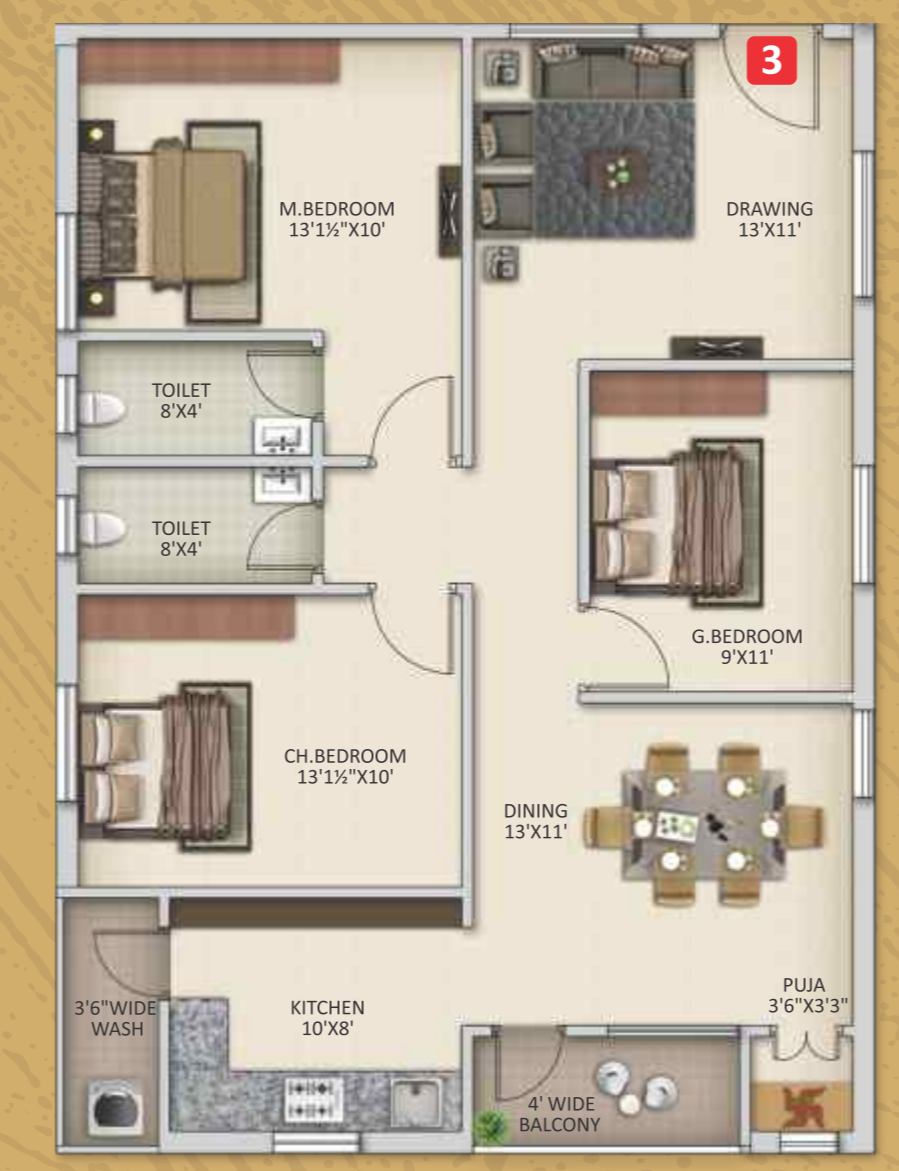


**Location Highlights**

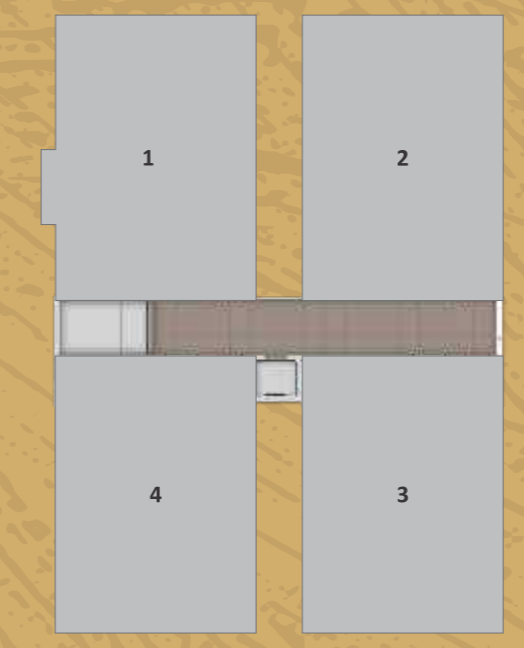
- Street Name - Yesuvari Street
- Sharma Hospital
- St. Joseph's School
- SBI Jaganaickpur (Behind our site)
- Main Road
- Andhra Polytechnic
- MSN Charities College

**More space to Breathe**

Vamshi Vihar is designed to give you an unprecedented access to beautiful views and fresh lifestyle. With this in mind, we have ensured vast amount of open spaces around your home. Now breathe in fresh environs.



Flat No.	Carpet Area	Plinth Area	Total Area
1	959	1135	1410
2	950	1114	1394
3	917	1083	1355
4	917	1083	1355



**Location with the great connectivity**

The matchless location of Vamshi Vihar gives you the comfort of finding everything you need, within your vicinity. The amazing connectivity offers you the rare opportunity to spend time with your family rather than traffic.

